




encorp



OVERVIEW

- 🌐 Encorp Group is an emerging engineering group, with Indian roots and global out-reach; offering end-to-end manufacturing solutions of steel structures to Transmission Line Towers (TLT), Solar Structures, Project Electrification & General Engineering industry.
- 🌐 Encorp Group offers a wide array of engineering services ranging from **plate fabrication, machining & assembly; structural steel fabrication (punching, shearing, notching, bending, etc)** ,Sheet Metal Fabrication and Hot Dip **Galvanizing** through its Transmission Line Towers (TLT) & General Engineering verticals.
- 🌐 Set up over a substantial land mass of **60,000 sq.mtr**, in one of India's most conducive environment for industry, **Tarapur** (Maharashtra), Encorp group will offer an integrated fabrication and galvanizing facilities to cater to the increasing demands of EHV **Transmission Line Towers(TLT); Substation Structures, Solar Mounting Structures & Heavy Engineering ,Project Equipment Fabrication Industry**

ABOUT ENCORP GROUP

 Encorp Groups foundation was laid in the year 2006, with foray into textile industry through our company Valeron Textile Private Limited.

ENCORP POWERTRANS PRIVATE LIMITED

Most ambitious of all our ventures, which has built a state of the art fabrication & galvanizing facility for Power Transmission & Projects & Sundry Galvanizing industry, is the Third Venture of our Group catering mainly to various Steel Structures Requirements of Infrastructure Industry.

ENCORP ENGINEERING PRIVATE LIMITED

Encorp Engineering marked the foray of our group in engineering related manufacturing services. During its 1 year of operation, Encorp Engineering worked as a dedicated vendor for a Morgan Construction Co. India (now a part of SIEMENS VAI group), where it turned out 100 MT of fabricated and machined equipment per month.


Presently, group has revived operations of Encorp Engineering in similar line of services.

VALERON TEXTILE PRIVATE LIMITED





Setup in 2006, Valeron Textile is a Tarapur based, manufacturing unit of synthetic & cotton grey fabric & technical textiles, with an annual production of 1.2 million meters of grey fabric and a total workforce of 75

VISION AND VALUES

VISION

-  Create a Global Sourcing hub for engineering and manufacturing solutions in the Infrastructure and Project Management domain.

VALUES

-  To lead by example through a commitment that empowers the organization at every level to strive for the highest levels of quality, customer care and shareholder value.
-  We at Encorp certainly believe that the fine line differentiating a leader and a follower is "Innovation" and this belief will always be imbibed in our culture
-  We consider ourselves as strategic Sourcing partners of our Customer, and this belief will be imbibed in every aspect of our existence, be it production capacities and capabilities, customer service or growth plans.
-  To nurture indigenous low cost manufacturing solutions on sustainable basis, while meeting global standards.

OUR BOARD

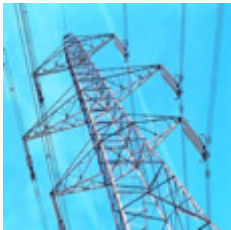
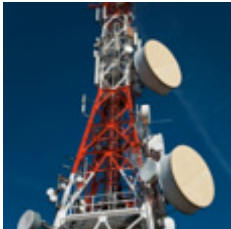


Dr. Vinod Nowal (Mentor): Currently working as the Deputy Managing Director of JSW Steel Ltd, India's Largest Private Steel Manufacturer and World's fastest growing Steel company, Dr. Vinod Nowal has been the source of inspiration and motivation for our group, since our inception in 2006. He'll continue steering our group with his worldly knowledge and his rich experience of working in diverse manufacturing and corporate environment.

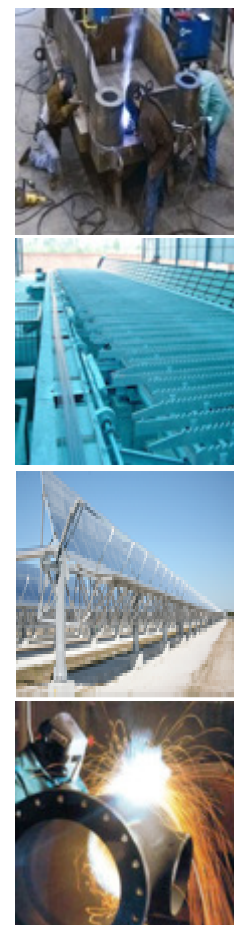
Dr. Rahul Nowal (Director)-MBBS: Encorp Powertrans has been setup under the able leadership of our Director, Dr. Rahul Nowal who has been instrumental in setting up our first venture in the domain of Textile Weaving industry, which has grown into a respectable name in the industry within a commendable time since 2006. He has been pivotal in setting up Encorp Powertrans and is spearheading the group with aim to provide customer satisfaction & deliver Quality Product in time.

Vinay Nowal (Director)-B.E Mechanical: Founder of Encorp Engineering, Vinay Nowal brings with him his engineering acumen, acquired through formal studies and diverse experience of setting up and running a fabrication, machining and assembly workshop as a vendor for US based world leader in rolling mill technology, which is extend to managing day to day operations as well as upgrading systems & technology to keep abreast latest development in Engineering world.

PRODUCTS AND SERVICES


Encorp Group offers a wide array of engineering services ranging from **plate fabrication, machining & assembly; structural steel fabrication (punching, shearing, notching, bending, etc)** sheet metal fabrication (shearing, punching, bending, roll forming) and **Hot Dip Galvanizing**

		SERVICES	INDUSTRIES SERVED	SERVICES	INDUSTRIES SERVED
   		HOT DIP GALVANIZING	<ul style="list-style-type: none"> Power (EHV) Transmission Line Towers Substation Structures Solar Power Plant Mounting Structures Telecom Towers Cable Trays/ Gratings Crash Guards GI Earthing Strips Railway Electrification Distribution/Rural Electrification 	PLATES , STRUCTURAL STEEL & SHEET METAL FABRICATION + MACHINING + ASSEMBLY + PAINTING	<ul style="list-style-type: none"> Steel Rolling Mills Power Plants Heavy Engineering General Engineering Project Fabrication Technological Structure Pre -Engineered Buildings Cable trays and Balance of Plant (BoP)
		+			
		STRUCTURAL STEEL FABRICATION			



LOCATION

 Based in one of India's most developed industrial town of 'Tarapur'

 Located at 100km from Mumbai city off
Mumbai-Delhi National highway (part of
upcoming Mumbai-Delhi industrial corridor)

Distance from Mumbai	:	90 km
----------------------	---	-------


Distance from Nasik	:	200 km
---------------------	---	--------

Distance from Thane	:	70 km
---------------------	---	-------

Distance from Vadodara	:	350 km
------------------------	---	--------

 Proximity to Major Markets and ideally located
from ample source of Raw Material

Distance from JNPT	:	90 km
--------------------	---	-------

 Access to Road, Rail & Sea Modes of Transport

 Ample of Skilled Labor Availability

 Reliable and diverse availability of Auxiliary Services

 Prosperous and Safe environment for Industries, isolated from Labor Problems

 New Port and Dedicated Freight Corridor Railway Connectivity at Tarapur in near future

LAND AND INFRASTRUCTURE

- 🌐 Spread over substantial landmass of 15 acres with 7 acres available for expansion.
- 🌐 Well planned layout enabling optimum output with ease of flow of material
- 🌐 Continuous and Reliable Power supply from Grid
- 🌐 Complimented by Captive Power using DG set
- 🌐 Proximity to ‘Surya River’ ensuring continuous supply of Soft Water for Galvanizing
- 🌐 Experienced Staff and management team with Collective Work experience of more than 500 years and average experience of more than 15 years.



	CAPACITY	AREA UNDER OPERATION
GALVANIZING	30,000 TPA	110 mtr x 20 mtr x 13 mtr (under crane)
FABRICATION SHOP 1	22,000 TPA	100 mtr x 20 mtr x 7 mtr
FABRICATION SHOP 2	8,000 TPA	50 mtr x 20 mtr x 7 mtr
STORAGE YARD	--	6 acres (1,60,000 sq. ft)

4000 sq.mtr of Raw Material Yard

Material Holding Capacity of 1000 MT

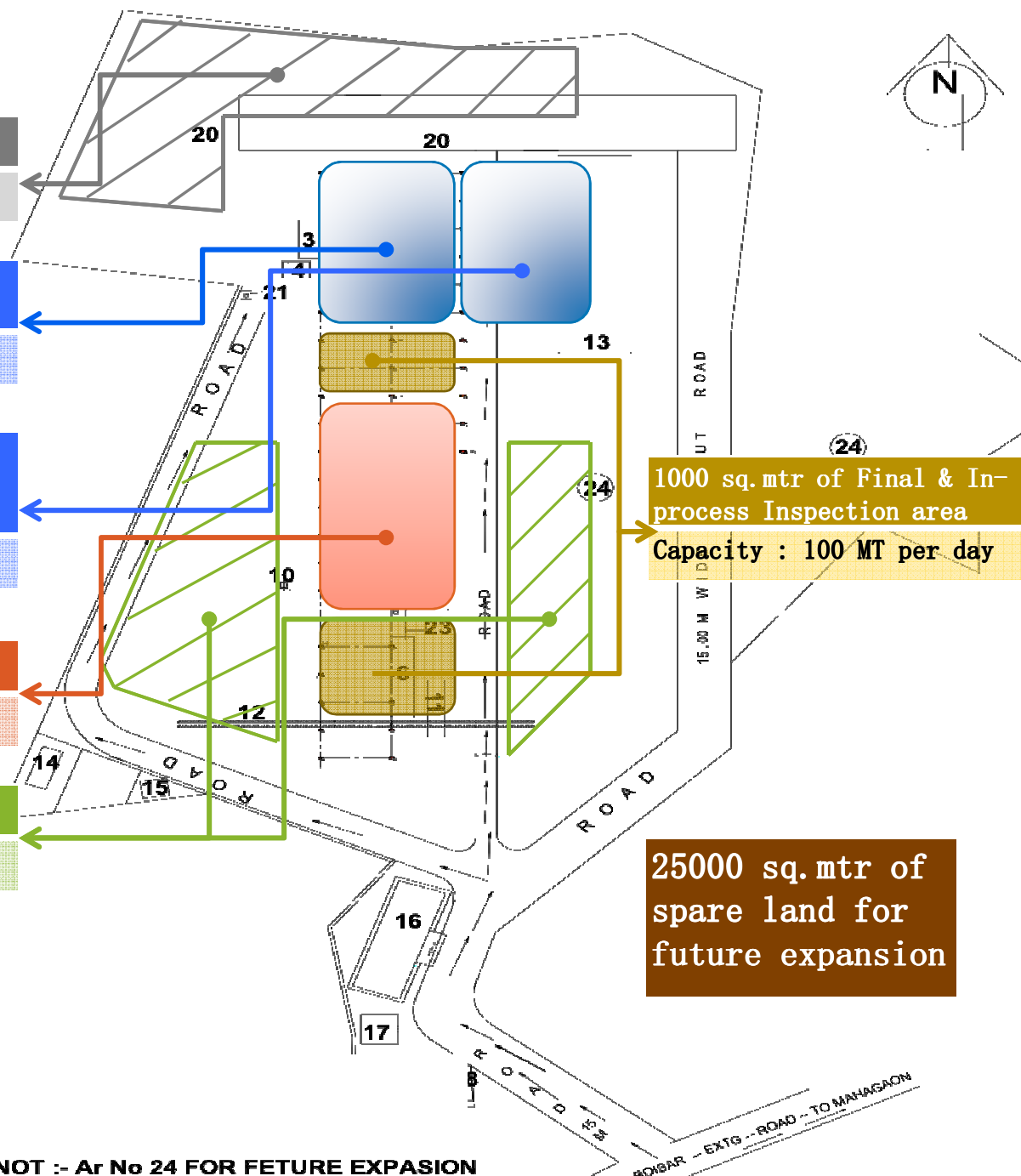
Material Holding Capacity of 1000 MT

Annual Capacity : 18000 MT PA

Annual Capacity : 12000 MT PA

Annual Capacity : 36,000 MT PA

Material Holding Capacity : 2,000 MT



NOT :- Ar No 24 FOR FETURE EXPASION

PLANT & MACHINERY – FABRICATION

18000 MTpA of Lattice Tower Structures for Transmission Line Towers and Substations

- Equipped with latest set of machinery which includes CNC machine for L Sections and range of hydraulic machines
- Capable of processing steel products conforming to BSEN, ASTM, JIS, DIN, IS, AS & Euro specifications.
- Prototype Assembly-Designated Area and Dedicated erection and engineering team to erect Prototypes and engineer the same if required.

6000 MTpA of Technical fabrication for Project Segment (*Solar / Thermal Power Plant, Steel Plants, Varied Industries, etc*)

- Wide range of Welding machines, ranging from TIG, MIG & Arc, to cover jobs of any kind & complexity
- In house Shot Blasting & Painting Service, complimenting galvanizing service, provides comprehensive coating solution
- Certified and qualified technicians and weldors develop Special Jigs & Fixtures to create production assembly lines for Fabrication jobs.

6000 MTpA of Sheet Metal fabrication for Solar PV Rafters, Purlins, Cable Trays

- State of art CNC Roll forming machine already indented & expected by Oct'14, will increase our offering to Solar PV & PEB exponentially
- Dedicated vendor based setup for Cable tray manufacturing, to cater to Project Electrification segment

PLANT & MACHINERY (FABRICATION)

NAME	TYPE	No.s	CAPACITY in MTpA	MAKE	YOM
CUTTING	CNC Angle Line for L sections	1	4,000	FIN CNC, China	2014
	CNC Profile Cutting Machine	1	7,500	Fabgear, India	2011
	Shearing Machine for L Sections & Plates	3	21,500	Hydroelectric, India	2011
	Double Column Band Saw M/c for	1	4,000	Multi-Cut, India	2014
	Chop Saw Machines for Tube & Pipes	4	7,000	Dewalt, india	2013
PUNCHING & DRILLING	CNC Angle Punching Machine	1	4,000	FIN CNC, China	2014
	Hydraulic Punching Machine for Steel Structure & Plate	6	14,500	Hydroelectric, India	2011
	Radial Drilling Machine	3	7,000	Atlas, India	2011
	Magnetic Drilling Machine	4	3,500	KPT, India	2013
BENDING	Horizontal Bending Machine for structures (Hot & Cold Bending)	1	3,000	Hydroelectric, India	2011
	Vertical Bending Machine for Plates	1	1,800	Hydroelectric, India	2011
NOTCHING	Hydraulic Notching Machine for Plates & Structures	2	5,500	Hydroelectric, india	2011

PLANT & MACHINERY (FABRICATION)

NAME	TYPE	No.s	CAPACITY in MTpA	MAKE	YOM
MARKING	CNC Angle Stamping Machine	1	4,000	FIN CNC, China	2014
	Hydraulic Stamping Machine for Plates & Structures	3	14,400	Hydroelectric, India	2011
WELDING					
WELDING	TIG Welding Machine	2	250 Amp	Warp, India	2013
	MIG Welding Machine	4	400 Amp	Warp, India	2013
	Electric Arc Welding Machine	3	600 Amp	MEMCO, India	2011
SHOT BLASTING					
SHOT BLASTING	Double Piston Reciprocating Compressor	1	40 H.P	ELGI, India	2011
	Air Receiver Tank	1	1 Ton	India	2011
	Grit Hopper	1	500 Kg	India	2011
	Blast Room	1	6 mtr x 6 mtr	Inhouse Fabn	2014
PAINT SHOP					
PAINTING	Airless Painting Spray Equipment for MIO, Zinc Silicate, Epoxy Paints	1	40:1 ratio	VR Coatings	2014

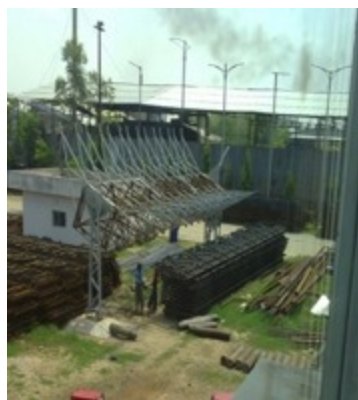
PLANT & MACHINERY – QUALITY TOOLS

INSTRUMENT	SPECIFICATION	LEAST COUNT	MAKE
Electronic Universal Testing Machine	600 KN	± 1%	Mechatronic Control System, India
Rockwell Hardness Testing Machine	150 Kgf	--	Mechatronic Control System, India
Digital Micrometer	0 - 25 mm	0.001 mm	Mitutoyo
External Micrometer	0 – 25 mm	0.01 mm	Mitutoyo
Engineer's Square	240 – 130 mm	--	JDE CO
Steel Scale	0 – 300 mm	1.00 mm	Kristeel
Steel Tape	0 – 3, 5, 15 mtr	1.00 mm	Freemans
Dial Caliper	0 – 200 mm	0.02 mm	Mitutoyo
Digital Caliper	0 – 200 mm	0.01 mm	Mitutoyo
Std Vernier Caliper	0 – 200 mm	0.02 mm	Mitutoyo
Universal Bevel Protactor	0 - 360°	5.0 deg/min	Mitutoyo
Pitch Gauge	0.25 – 6 mm	0.05 mm	Whitworth
Radius Gauge	1 – 7 mm / 15 – 25 mm		Kristeel Shinwa
SHOTBLASTING			
Surface Comparator	25, 40, 60, 70, 100, 150 µm		Elcometer
PAINTING			
Hygrometer	Temp Range: -50° - +70° C / Humidity Range : 10% RH – 99% RH		

SNAPSHOTS OF FABRICATION SECTION



SNAPSHOTS OF FABRICATION SECTION



PLANT & MACHINERY – GALVANIZING

GALVANIZING

- Galvanizing Capacity of 2500 MT per month / 30,000 MT per annum
- Automatic Temperature Control
- Micro Processor Controlled Dual Fuel Furnace
- Preheating of Structure & uniform drying using Hot Plate
- Capable of uniform coating requirement of 340 and 910 grams per sq.mts (46 to 130 micron)
- Galvanize structures upto 9 mtr by Direct Dipping and 12 mtr by Double Dipping for width upto 1.1 mtr



	LENGTH	BREADTH	DEPTH
HOT DIP GALVANIZING	8 mtr	1.2 mtr	1.6 mtr
DEGREASING TANK	12 mtr	1.2 mtr	1.5 mtr
ACID TANK (3 No.s)	12 mtr	1.3 mtr	1.5 mtr
QUENCHING TANK	12 mtr	1.2 mtr	1.5 mtr
DICHROMATING TANK	12 mtr	1.2 mtr	1.5 mtr

SNAPSHOTS OF GALVANIZING SECTION



HOT DIP GALVANIZING TANK



PRE-GALVANIZING TANKS



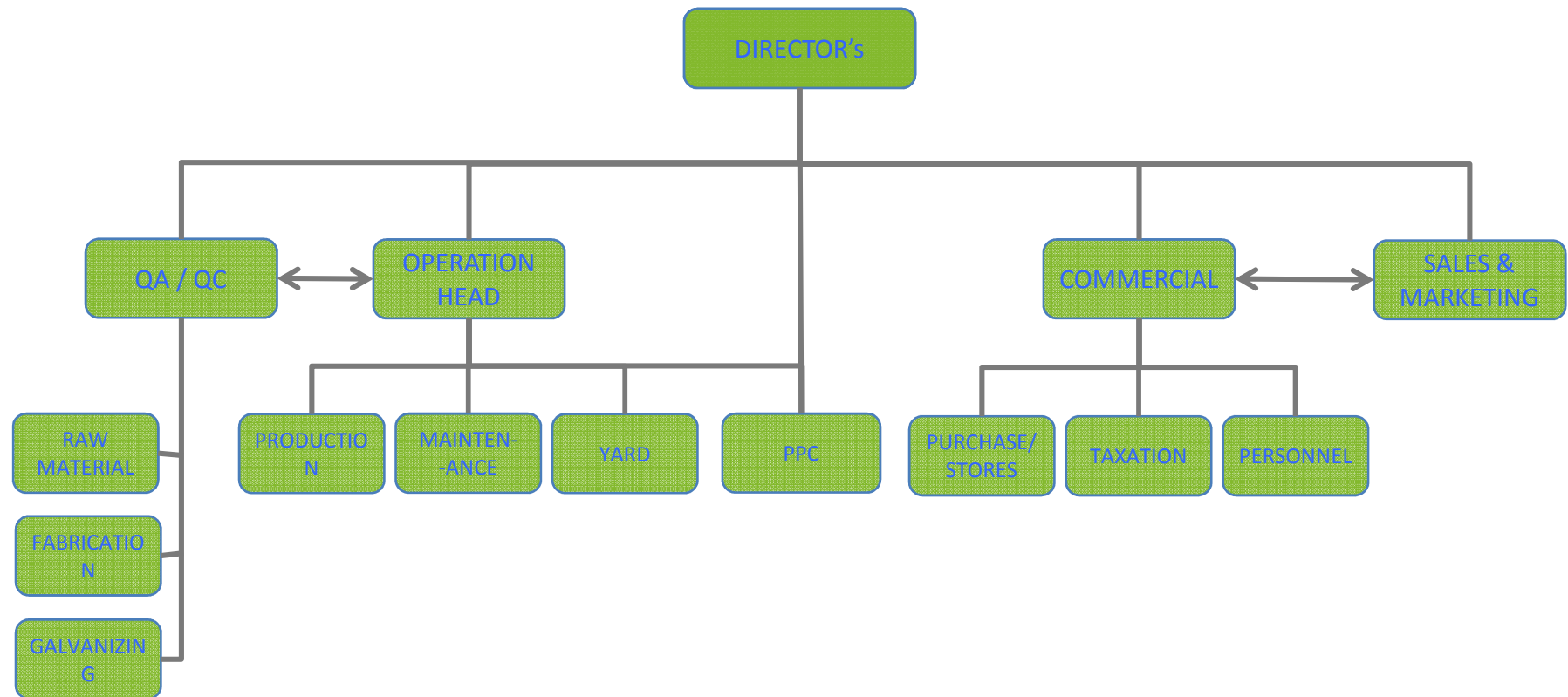
RINSING +
DICHROMATING TANKS



PLANT & MACHINERY – QUALITY TOOLS

INSTRUMENT	SPECIFICATION	LEAST COUNT	MAKE
Thermometer Glass Type	-10° to +50° C	0.5° C	GH Zeal
Coating Thickness Gauge (Elcometer)	0 – 2000 μm	From 0 ~ 20 μm – 0.1 μm Above 20~2000 – 1 μm	Yuyutsu
Digital PH meter	0 to 14 PH	0.1 PH	Hanna Instruments
Hydrometer	0.700 to 1.000	-0.005	Leimco
	1.000 to 2.000	0.01	
LABORATORY TESTS			
Pivoted Hammer		Coating Peel off Test	
Knife test apparatus		Coating Adhesion Test	
Stripping Test apparatus (Using HCL solution)		Coating Mass calculation	
Preece Test apparatus (Using Copper Sulphate Solution)		Coating Adhesion Depth Test	
Titration apparatus using Sodium Hydroxide Solution		Acid Concentration Test for Pickling Process Tank	
Nomograph for Iron content analysis		Iron Content Analysis Test for Pickling process Tank	
Filtration, Heating & Titration appratus		Concentration Test for Flux Tank	
Third Party Spectro Analysis of Zinc Bath Sample		Zinc Bath Content Test on Monthly basis	
Titration apparatus using Sodium Hydroxide Solution		Concentration Test for Dichromate (Passivation) Tank	

ORGANIZATION STRUCTURE



OTHER GROUP HIGHLIGHTS – ENCORP GROUP

QUALITY AND SYSTEMS

- ISO 9001: 2008 certified
- Well defined and equipped Testing Laboratory
- Specially trained inspectors
- ERP backed Systems and Operations
- Ensure Material Traceability
- Best Industry Practices in Manufacturing
- Comply Quality Assurance Plan and Laid systems and procedures



OTHER GROUP HIGHLIGHTS – ENCORP GROUP

PACKAGING AND DELIVERY

- 🌐 Tower wise Bundling
- 🌐 On site Containerized Stuffing
- 🌐 Export Packing

MATERIAL HANDLING

- 🌐 Straight line, Bottleneck free Flow of Material
- 🌐 Spacious Raw Material Yard & Finished Goods Yard spread over 6 acres (24,000 sqmts)

Cranes:

GALVANIZING SHED	3 x 5 MT Overhead Cranes
FABRICATION SHED	1 x 5 MT Overhead Crane 1 x 10 MT Overhead Crane
RAW MATERIAL AND FINISHED MATERIAL YARD	2 x 12 MT Mobile Hydraulic Crane
DISPATCH SECTION	Trolley Track for smooth flow of material

DESIGN AND ENGINEERING FACILITY

- 🌐 Qualified team complimented by 3D analysis and CAD software
- 🌐 Services extended to Prototype designing and manufacturing, developing Shop sketches.



OTHER GROUP HIGHLIGHTS – ENCORP GROUP

POLLUTION CONTROL MEASURES

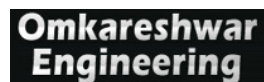
- 🌐 Captive Modern and Effective Effluent Treatment Plant
- 🌐 Pickling Section equipped with Fume Extraction System
- 🌐 Environmental clearances already obtained



SOURCING OF RAW MATERIAL

- 🌐 Ample options available for sourcing 2 key raw materials: Zinc & Steel
- 🌐 Zinc: ‘Hindustan Zinc’ has a warehouse and sales depot in Tarapur.
- 🌐 Located at a distance of 45 kms from Maharashtra’s rolling mill hub in WADA
- 🌐 Ease of access to rolling mills of Raipur ,Nagpur and Gujrat as well
- 🌐 Steel plates can be sourced from JSW (Vasind/ Dolvi), Essar (Hazira) or Welspun (Anjar)
- 🌐 Also Situated close to India’s biggest steel trading & stocking hub at Kalamboli/ Taloja

PRESTIGIOUS CLIENTELE



WHY ENCORP??-YOUR GLOBAL SOURCING PARTNER

One stop shop for plates, sheet metal & structural steel fabricated welded jobs, part machining, assembly & most importantly galvanizing operation.

Potential to become sourcing hub, owing to ample storage space (more than 5 acres) for raw material, WIP & finished goods

Right balance of appropriate infrastructure, experienced manpower, progressive thinking & dynamic leadership in a conducive environment

Proximity to engineering centers like Vasai, Tarapur, Thane & Rabale, necessary for any auxiliary services (CNC machining & CNC machined parts)

Situated on logistically well connected route of Mumbai-Delhi industrial corridor

THANK YOU

CONTACT DETAILS:

Railway & TLT :-

Mr. Rajesh CH

M :- 91 9168687200

E : rajesh.ch@encorp.in

Hot Dip Galvanizing :-

Mr. D.S. Mathaaru

M :- 91 7720873222

E : mathaaru.ds@encorp.in

Job Opportunity :-

Mr. Rajeev Kumar / Ajay Patil

M :- 91 8308807411 / 7720895533

E : hr.ept@encorp.in

Solar, GE, GI, Earthing strips :-

Mr. Vijay Patel

M :- 91 7722099795

E : vijay.patel@encorp.in

Raw Material Purchase :-

Mr. Raghunandan

M :- 91 8390115613

E : raghunandan@encorp.in

Commercial :-

Mr. Punit Sharma

M :- 91 7720879555

E : comm.ept@encorp.in

THANK YOU

Director :-

Vinay Nowal

E : vinay.nowal@encorp.in

Director :-

Dr. Rahul Nowal

E : rahul.nowal@encorp.in



encorp

sales.ept@encorp.in

www.encorp.in

Works:

Encorp Powertrans (P) Ltd,
Gat No. 240/ 5/ 6/ 7, Vill- Varangade,
Boisar – Mahagaon Road, Boisar(E),
Tal – Palghar, Dist – Thane
Maharashtra - 401501